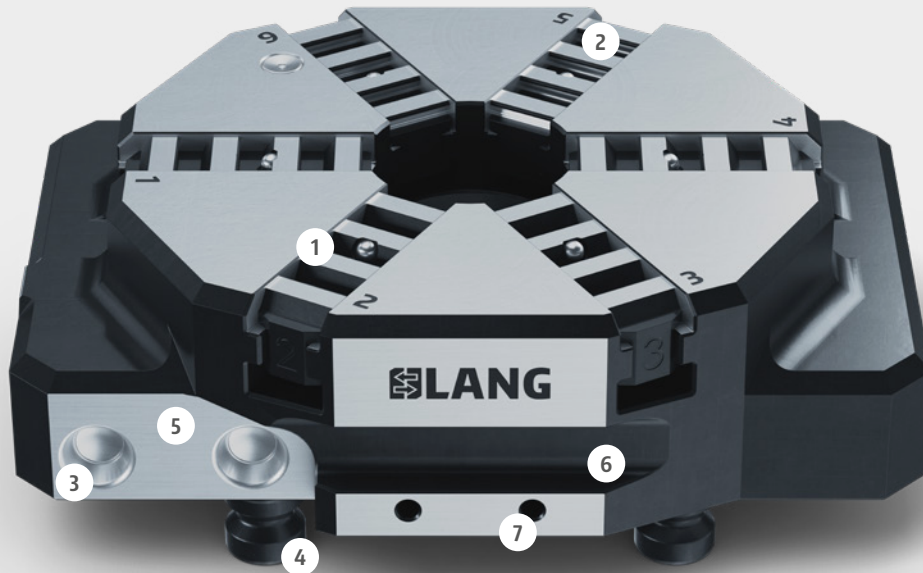
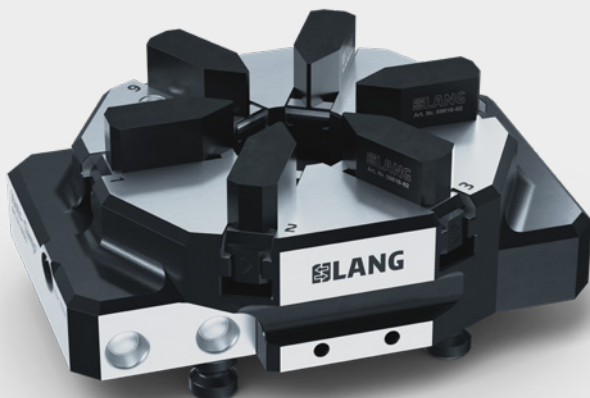


# Vasto-Clamp Technology

The versatile 6-jaw chuck with quick exchange system



- 1 Innovative click mechanism ensures quick jaw exchange
- 2 Different jaw types offer various application possibilities
- 3 Gripper interface allows utilization in the RoboTrex 96 automation system
- 4 Integrated Quick-Point® zero-point interface
- 5 Robust steel base for maximum durability
- 6 Recess for an ergonomic handling
- 7 Swarf and coolant drain

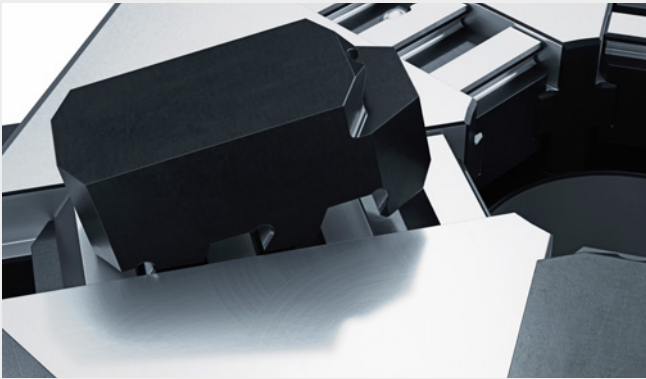


Vasto-Clamp 6-jaw chuck with 6 soft top jaws



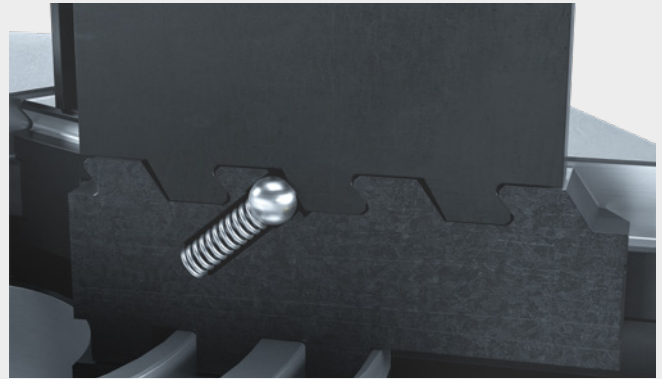
Vasto-Clamp 6-jaw chuck with 3 hardened gripping jaws

## Innovative jaw exchange without tools



Without the use of any tools, the top jaws are locked into the base jaws (directional movement from the inside to the outside).

The Vasto-Clamp 6-jaw chuck with quick-jaw exchange system is equally suited for machining blanks as well as for contour clamping of deformation-sensitive components. Depending on the application, the user can choose between hardened gripping jaws and soft top jaws. In both cases the hand-operated spiral chuck uses a clamping principle by friction. The top jaws are fastened completely



A spring-loaded ball bearing ensures a firm fit of the top jaw.

without additional tools via an innovative click mechanism, which ensures an extremely robust and resilient jaw fit. The jaw chuck is equipped with an integrated zero-point mounting and automation interface for RoboTrex and can be used for both outer diameter and, with special jaws, for inner diameter clamping.

## Applications

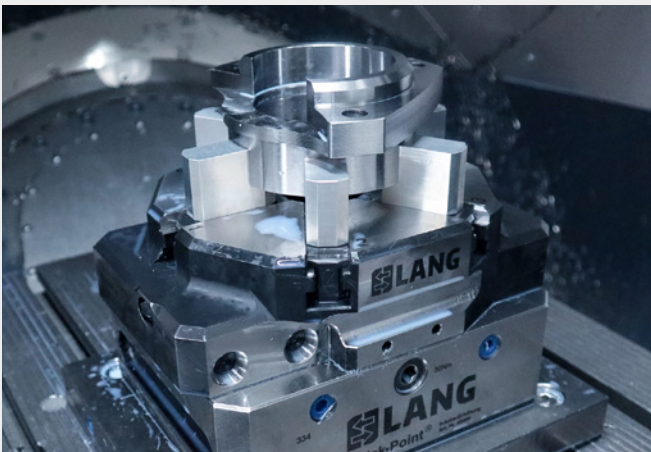


Image: CNC-Technik Ortlieb GmbH & Co. KG

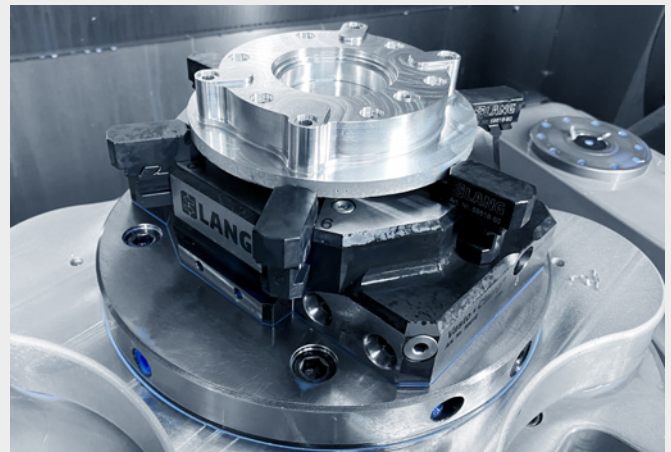


Image: Dengler CNC-Technik



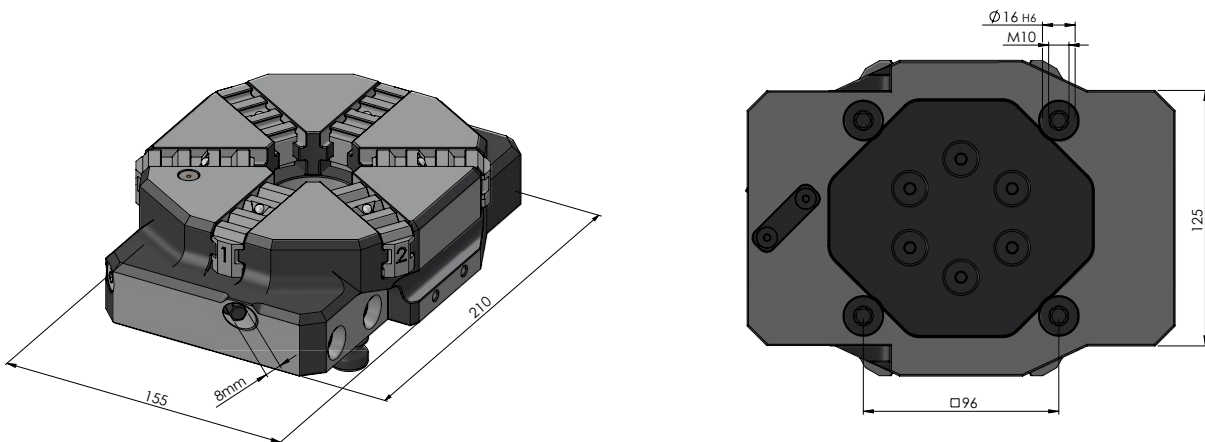
# Vasto-Clamp 6-Jaw Chuck

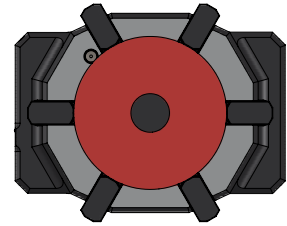
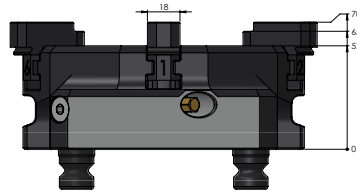


## VASTO-CLAMP 6-JAW CHUCK

ITEM NO.	DIMENSIONS	CLAMPING RANGE	WEIGHT
59616	210 × 155 × 57 mm	10 – 160 mm	9.6 kg

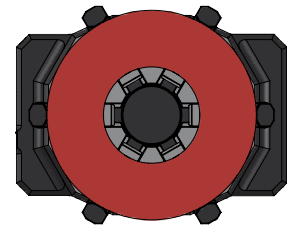
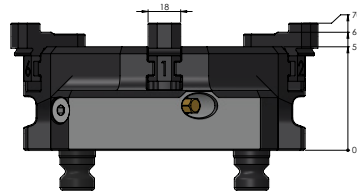
Included in delivery: Base jaws for O.D. clamping, hexagonal insert with drive square 1/4", size 8 mm





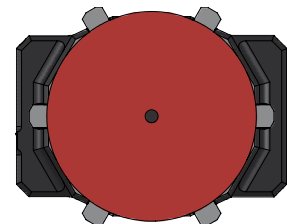
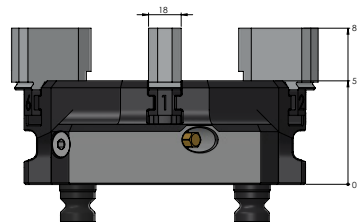
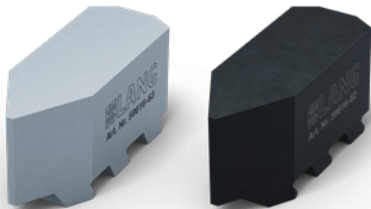
### VASTO-CLAMP GRIPPING JAWS (HARDENED)

ITEM NO.	MATERIAL	CLAMPING RANGE	QUANTITY
59616-60	Steel (16 MnCr 5)	30 - 120 mm	6 pcs.



### VASTO-CLAMP GRIPPING JAWS (HARDENED)

ITEM NO.	MATERIAL	CLAMPING RANGE	QUANTITY
59616-61	Steel (16 MnCr 5)	75 - 160 mm	6 pcs.

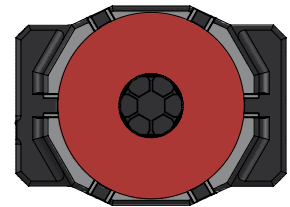
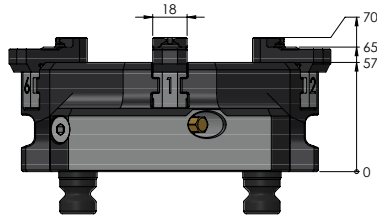


### VASTO-CLAMP TOP JAWS, SOFT

ITEM NO.	MATERIAL	CLAMPING RANGE	QUANTITY
59616-62	Steel (16 MnCr 5)	10 - 160 mm	6 pcs.
59616-63	Aluminium (F 50)	10 - 160 mm	6 pcs.

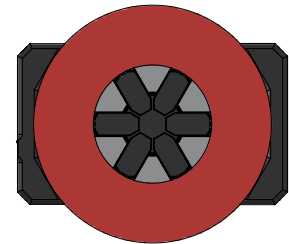
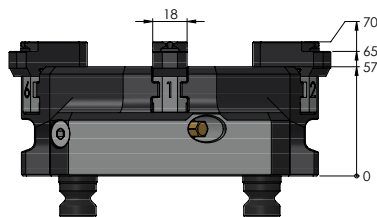
**NEW**

# Vasto-Clamp Gripping and Top Jaws for inner diameter clamping



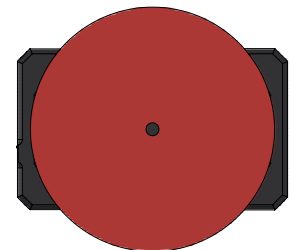
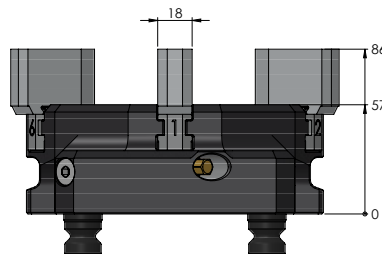
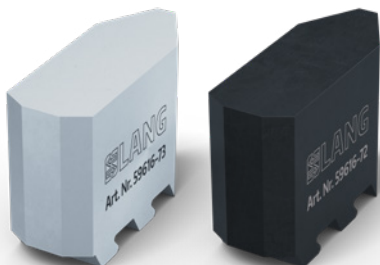
## VASTO-CLAMP GRIPPING JAWS FOR I.D. CLAMPING (HARDENED)

ITEM NO.	MATERIAL	CLAMPING RANGE	QUANTITY
59616-70	Steel (16 MnCr 5)	50 – 145 mm	6 pcs.



## VASTO-CLAMP GRIPPING JAWS FOR I.D. CLAMPING (HARDENED)

ITEM NO.	MATERIAL	CLAMPING RANGE	QUANTITY
59616-71	Steel (16 MnCr 5)	90 – 185 mm	6 pcs.

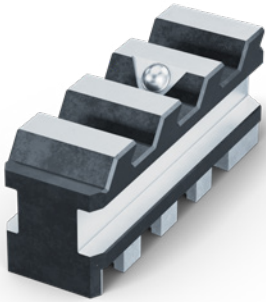


## VASTO-CLAMP TOP JAWS FOR I.D. CLAMPING (HARDENED)

ITEM NO.	MATERIAL	CLAMPING RANGE	QUANTITY
59616-72	Steel (16 MnCr 5)	10 – 190 mm	6 pcs.
59616-73	Aluminium (F 50)	10 – 190 mm	6 pcs.

NEW

# Vasto-Clamp Base Jaws for inner diameter clamping

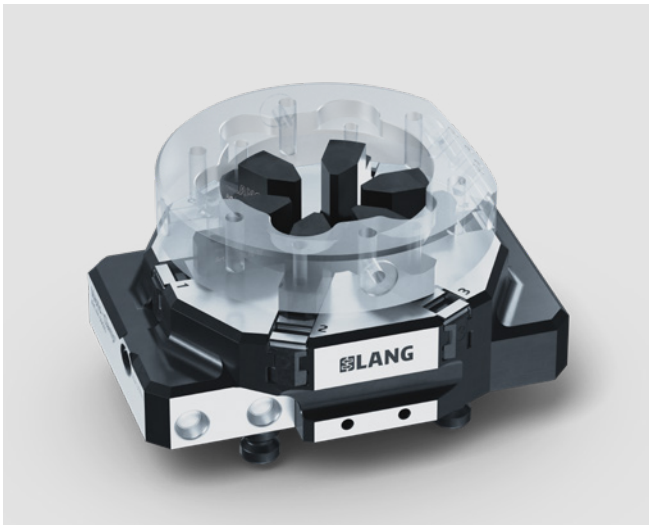


## VASTO-CLAMP BASE JAWS FOR I.D. CLAMPING

ITEM NO.	MATERIAL	FOR	QUANTITY
59616-30	Steel (16 MnCr 5)	59616-70 to 59616-73	6 pcs.



Vasto-Clamp with 6 hardened gripping jaws for I.D. clamping.



Vasto-Clamp with 6 soft top jaws for I.D. clamping.