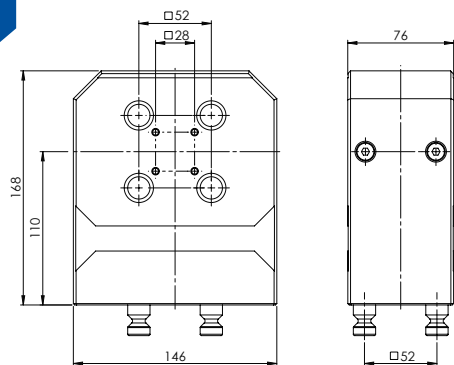


# Quick•Point® Twin Base

The hardened and ground Twin Base is ideal for manufacturing 5-axis parts with a 3-axis machine tool. Workpieces can be positioned  $4 \times 90^\circ$  safely and with a high repeat accuracy.

NEW VERSION



Upper interface:

Lower interface:



30 Nm



Ø 16 mm



77



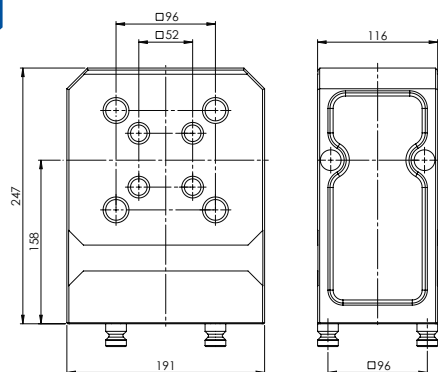
52

## QUICK•POINT® 52, TWIN BASE

ITEM NO.	DIMENSIONS	WEIGHT
47220	146 × 76 × 168 mm	13.8 kg

Suitable Quick•Lock: Item No. 44552 (page 60).

NEW



Lower interface:



30 Nm



Ø 16 / 20 mm



77 / 125



96

## QUICK•POINT® 52 / 96, COMBO TWIN BASE

ITEM NO.	DIMENSIONS	WEIGHT
47548	192 × 116 × 247 mm	27,5 kg

Included: 4 Quick•Point® clamping studs Ø 20 mm.

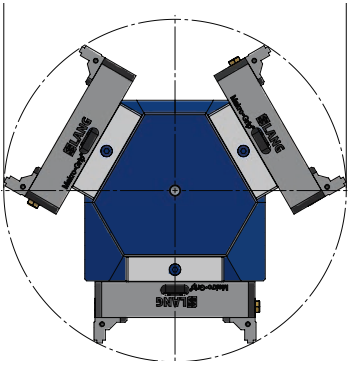
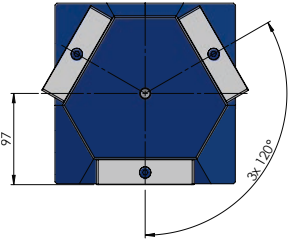
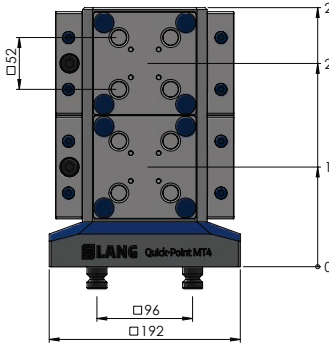
# Quick-Point® MT3 3-face Tombstone



Lower interface



96



The 3-face Tombstone can accept all vises with a jaw width of 46 and 77 mm when mounted horizontally.

## QUICK-POINT® MT3, 3-FACE TOMBSTONE

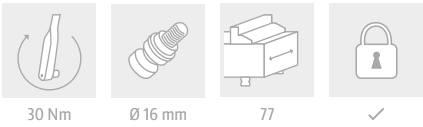
ITEM NO.	DIMENSIONS	MAX. QTY OF GRID PLATES	WEIGHT
70263	192 × 192 × 260 mm	6 × 75600 or 3 × 45621	44.8 kg

Included: 4 × Quick-Point® clamping studs Ø 20 mm.

## Suitable Quick-Point® Plate for both Tombstones:



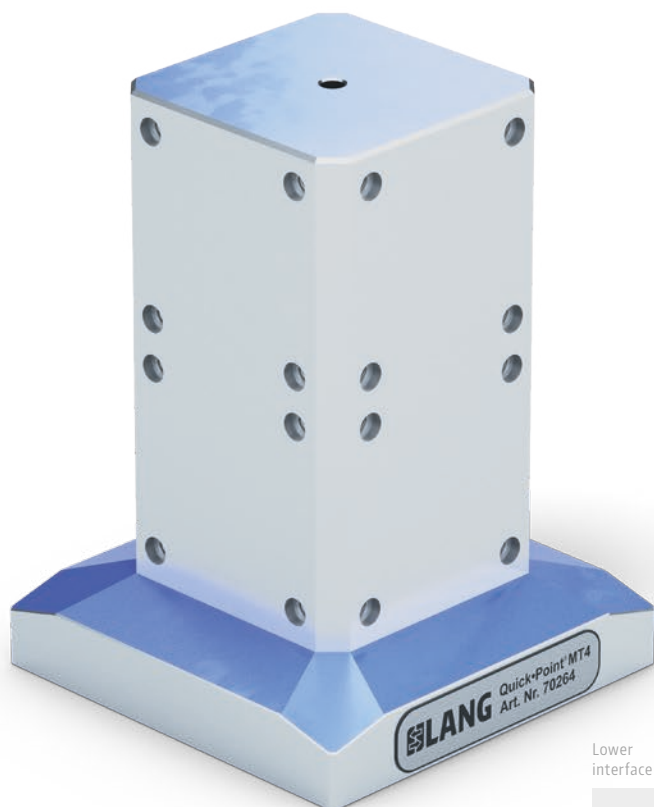
### QUICK-POINT® 52 GRID PLATE, 104 × 104 × 27 MM



ITEM NO.	DIMENSIONS	MOUNTING BORES	WEIGHT
75600	104 × 104 × 27 mm	82 × 82 mm	1.8 kg

Drawing on page 18.

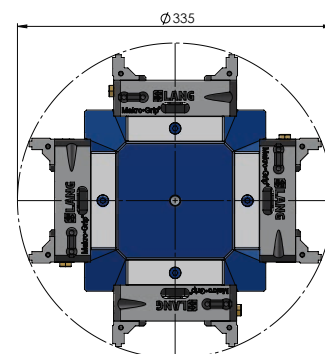
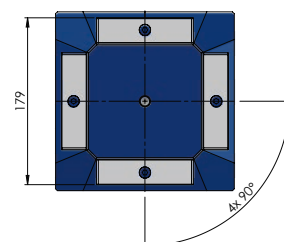
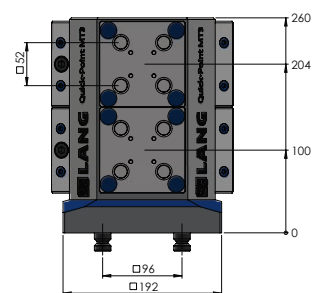
# Quick-Point® MT4 4-face Tombstone



Lower  
interface



96



The 4-face Tombstone can accept vises (jaw width 46 / 77) with a max. base length of 130 mm when mounted horizontally.

## QUICK-POINT® MT4, 4-FACE TOMBSTONE

ITEM NO.	DIMENSIONS	MAX. QTY OF GRID PLATES	WEIGHT
70264	192 × 192 × 260 mm	8 × 75600 or 4 × 45621	37.7 kg

Included: 4 × Quick-Point® clamping studs Ø 20 mm.

## Suitable Quick-Point® Plate for both Tombstones:



### QUICK-POINT® 52 2-FOLD GRID PLATE, 208 × 104 × 27 MM



30 Nm



Ø 16 mm



77



✓

ITEM NO.	DIMENSIONS	MOUNTING BORES	WEIGHT
45621	208 × 104 × 27 mm	186 × 82 mm	4.0 kg

Drawing on page 30.