



NEW PRODUCTS

— SPRING 2020

All new products presented in this brochure as well as **many other innovations** regarding our **workholding and automation systems** you will find in our new product catalogue issued during fall 2020. Make a note!

 **LANG
TECHNIK**
simple. gripping. future.

Makro·Grip® Night King

A 5-Axis Vice in its purest form



100 %

raw part clamping

automation

Made in Germany

Complete vice incl. jaws and zero-point interface
up to **45%** cheaper than our
most popular 5-Axis Vice

A vice for raw material clamping in its purest form, reduced to its basic requirements for 5-axis machining:

Accessibility and Holding Power

The top-selling and most popular Makro·Grip® 5-Axis Vice in a new version for automation systems.

Featuring all benefits of the approved LANG stamping and clamping technology at an unbeatable value-for-money ratio.

MAKRO·GRIP® 77, NIGHT KING

ITEM NO.	JAW WIDTH	CLAMPING RANGE
68120-77	77 mm	0 - 120 mm

*sold as a set of 5

PATENT PENDING

Makro·4Grip Clamping System

Stamping Technology for round parts

Due to its efficiency and the beneficial characteristics for workholding the LANG stamping technology still is the benchmark when it comes to processing raw parts in 5-axis machining.

With the Makro·4Grip Clamping System there are completely new possibilities and applications for the stamping technology. By retrofitting the Makro·Grip® stamping unit and LANG centring vices the form-closure clamping technology can be applied for round parts now easily and cost efficiently.

The Makro·4Grip system consists of universal stamping jaws including stamping inserts for individual positioning as well as matching clamping jaws for all sizes of LANG centring vices. The clamping jaws are available as a separate set of jaws for all 77 and 125 vices.

The jaws grip the pre-stamped part in four indentations at a clamping height of just 3 mm and therefore realise the same form-closure clamping principle as for the well-proven system for prismatic parts. Makro·4Grip covers a clamping range of Ø 36 mm to Ø 300 mm and so provides a seamless transition from the Preci-Point Collet Chuck.



MAKRO·4GRIP, STAMPING JAWS

ITEM NO.	QTY
51111	1 pair

* including 4 stamping inserts

MAKRO·4GRIP, STAMPING INSERTS

ITEM NO.	QTY
51111-40	4 pcs.

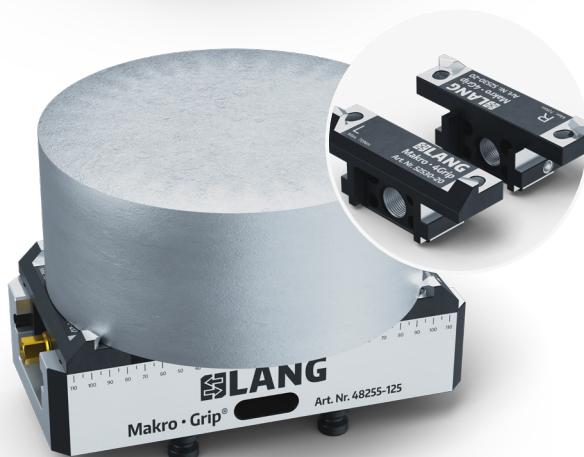


MAKRO·4GRIP 77, CLAMPING JAWS

FOR MAKRO·GRIP® 77	ITEM NO. 57708-20	ITEM NO. 57715-20
	jaw width 52 mm	jaw width 90 mm
48085-46 / -77	Ø 36 – 60 mm	Ø 81 – 100 mm
48120-46 / -77	Ø 36 – 80 mm	Ø 81 – 125 mm
48160-77	Ø 36 – 80 mm	Ø 81 – 150 mm

* All Makro·4Grip clamping jaws also fit our older vice versions.

For more information go to www.lang-technik.de/spannbereich-Makro-4Grip



MAKRO·4GRIP 125, CLAMPING JAWS

FOR MAKRO·GRIP® 125	ITEM NO. 52515-20	ITEM NO. 52530-20
	jaw width 90 mm	jaw width 128 mm
48155-77 / -125	Ø 81 – 130 mm	Ø 151 – 160 mm
48205-77 / -125	Ø 81 – 150 mm	Ø 151 – 200 mm
48255-125	Ø 81 – 150 mm	Ø 151 – 245 mm
48305-125	Ø 81 – 150 mm	Ø 151 – 290 mm
48355-125	Ø 81 – 150 mm	Ø 151 – 300 mm

PATENT PENDING

Vasto·Clamp 6-Jaw Chuck

The versatile 6-jaw chuck with quick exchange system



Vasto-Clamp 6-Jaw Chuck with 6 soft jaws



Vasto-Clamp 6-Jaw Chuck with 3 hardened gripping jaws

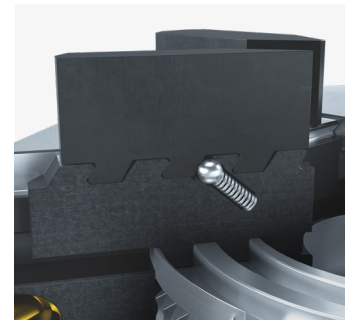
Like the Makro·4Grip clamping system, the Vasto·Clamp 6-Jaw Chuck has been engineered for clamping round parts as well. While Makro·4Grip is primarily applied for clamping round parts with the form-closure stamping technology, Vasto·Clamp uses a friction based clamping principle for clamping round material securely.

With its six top jaws Vasto·Clamp can be used for clamping raw parts with two different hardened gripping jaws or with soft jaws for components sensitive to deformation.

The manually actuated scroll chuck can be flexibly used as 3- or 6-jaw chuck. The mounting and exchange of the jaws is realised

without any tools by an innovative click mechanism, which provides a highly rigid and robust connection.

The Vasto·Clamp chuck is available with integrated 0-point studs for our Quick·Point® 96 zero-point clamping system, as well as integrated interface for the LANG RoboTrex automation.



VASTO·CLAMP, 6-JAW CHUCK

ITEM NO.	DIMENSIONS	CLAMPING RANGE
59616	210 × 155 × 57 mm	5 – 160 mm

AVAILABLE JAW TYPES

ITEM NO.	DESCRIPTION	MATERIAL	CLAMPING RANGE	UNIT
59616-60	Gripping Jaw, hardened	Steel	30 – 120 mm	6 pcs.
59616-61	Gripping Jaw, hardened	Steel	75 – 160 mm	6 pcs.
59616-62	Top Jaw, soft	Steel	5 – 160 mm	6 pcs.
59616-63	Top Jaw, soft	Aluminium	5 – 160 mm	6 pcs.



59616-60



59616-61



59616-62



59616-63