

# Makro·Grip® 46 micro Quick·Point® 52 duo



## → More parts clamped on a small footprint

and therefore perfect for multiple clamping on clamping bridges and tombstones

## → Greater application diversity

through modularity and compatibility with the Quick·Point® 52 system

## → Ideal for the automation of small parts

due to the combination of compactness and holding force

## Perfect combination in the tightest of spaces

"Small but mighty" has rarely been more fitting. The new Makro-Grip® 46 micro is a real space-saver – **perfectly suited for multiple clamping of small components in limited space**. Matching: The new Quick-Point® 52 duo series. What's special about it? A compact vise base body with only 2 clamping studs, which also makes it possible to clamp two 5-Axis Vises side by side in just one zero point plate.



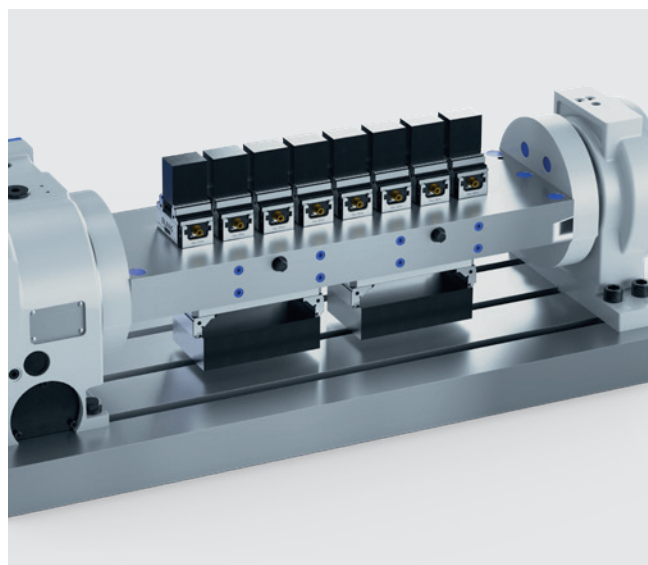
The micro vise has a hardened stamping contour in the base body, which allows it to be clamped in any Makro-Grip® 77 and 125 with high positioning accuracy. It thus offers a flexible option for quickly machining small components on 5 sides with large and medium-sized vises.



From big to very small – Even with the Quick-Point® 96 zero point clamping system, the Makro-Grip® micro can be used. This is made possible by additional adapter plates, which also provide extra accessibility in 5-sided machining.



The new Quick-Point® 52 duo6 zero point plate offers three possible clamping configurations: Two Makro-Grip® 46 micro clamped side by side (as shown in the picture), one Makro-Grip® 46 micro centered or one regular Makro-Grip® 5-Axis Vise with four clamping studs.



Clamping bridges and towers are ideally suited for multiple clamping in small spaces or for single part clamping of long components. The versatility of the zero point clamping system allows changeovers between different clamping setups within seconds.

## Makro·Grip® 46 micro

## Makro·Grip® FS 46 micro



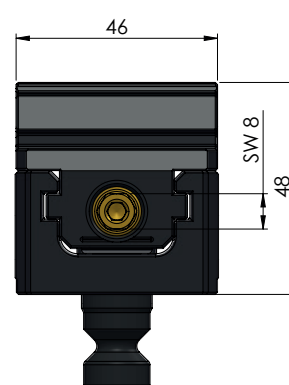
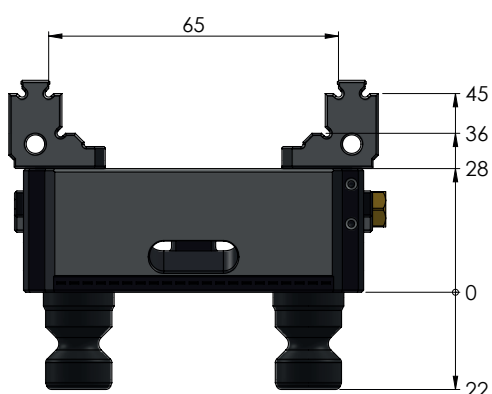
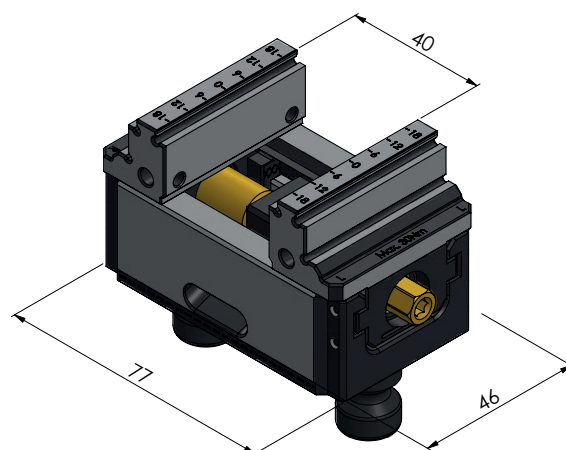
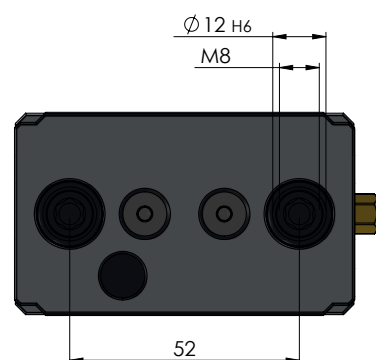
with control marks



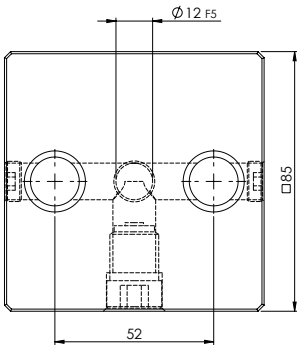
full serration

### MAKRO·GRIP® 46 MICRO, 5-AXIS VISE JAW WIDTH 46 MM

ITEM NO.	SERRATION TYPE	BASE LENGTH	CLAMPING RANGE	WEIGHT
48040-46	with control marks	77 mm	0 – 65 mm	0,8 kg
48040-46 FS	full serration	77 mm	0 – 65 mm	0,8 kg

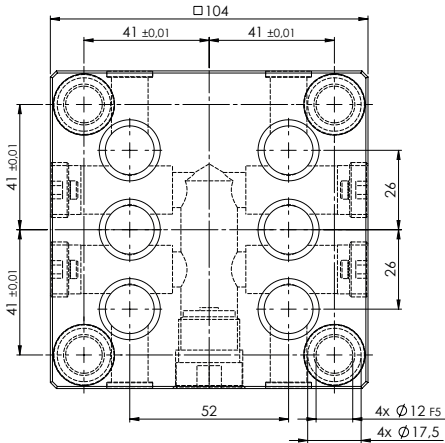


# Quick-Point® 52 duo



**QUICK-POINT® 52 DUO2, GRID PLATE**  
**85 × 85 × 27 MM, WITHOUT MOUNTING BORES**

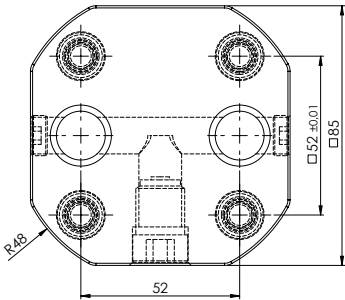
ITEM NO.	DIMENSIONS	WEIGHT
45602	85 × 85 × 27 mm	1,4 kg
45004	Set mounting bores according to customer's request	
45002	Set keyways according to customer's request	



**QUICK-POINT® 52 DUO6, GRID PLATE**  
**104 × 104 × 27 MM, WITH MOUNTING BORES FOR QUICK-TOWER**

ITEM NO.	DIMENSIONS	MOUNTING BORES	WEIGHT
75606	104 × 104 × 27 mm	82 × 82 mm	1,7 kg

Including 4 screws M 10 × 35, 2 bushings Ø 12 × 12 mm (Item No. 45000-09).



**QUICK-POINT® DUO2, ADAPTER PLATE**  
**85 × 85 × 27 MM**

ITEM NO.	DIMENSIONS	WEIGHT
45162	85 × 85 × 27 mm	1,4 kg

Including 4 Quick-Point® 52 clamping studs Ø 16 mm.